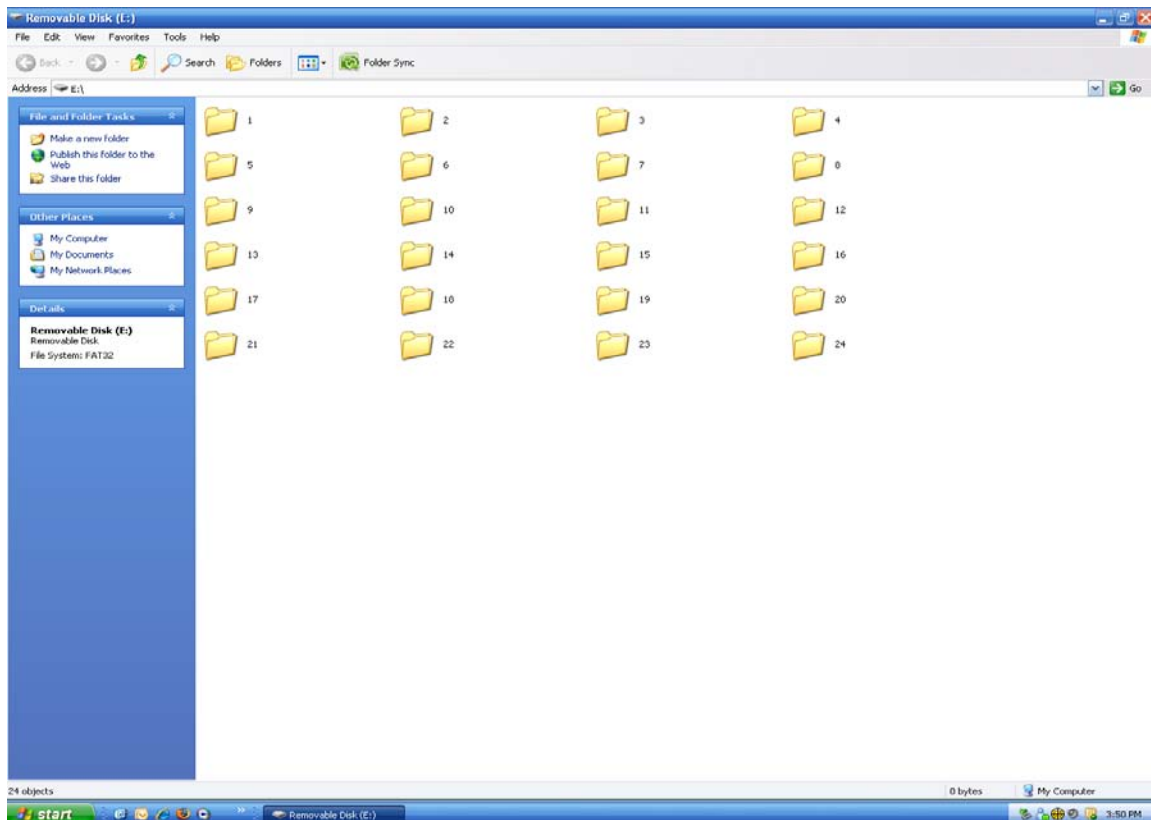


Digital Listening Station Instructions

To Program MP3 Audio Files to your Digital Listening Station you will need a Compact Flash Card (A) and a Flash Card Reader with a USB cable (B). As pictured below.

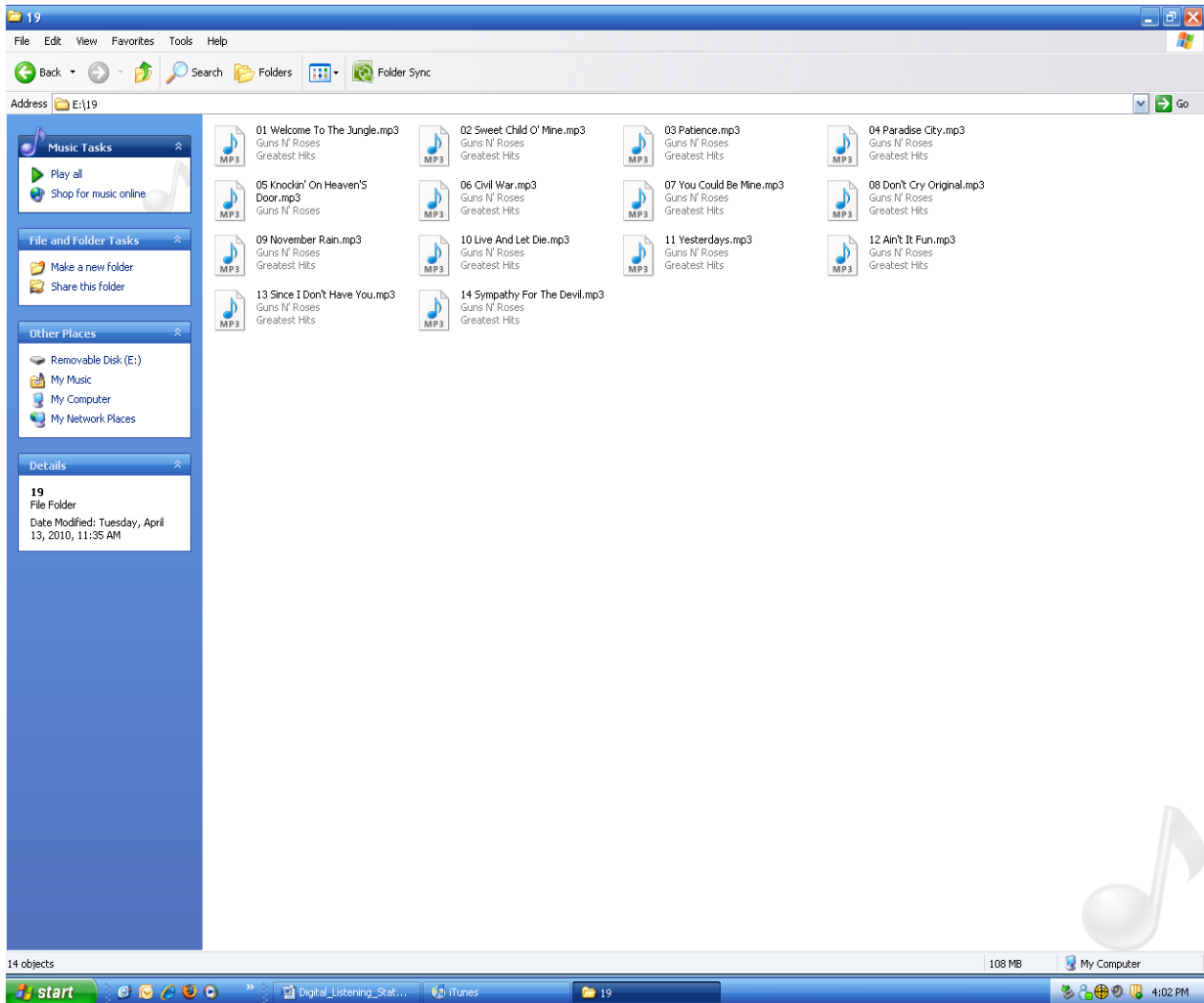


You can use a MAC or PC to program MP3 (audio files) on a CF Card to be played back on your Digital Listening Station. To program content for each button, you first need to create 24 folders on the flash card and name them 1-24. These 24 folders will represent the 24 buttons or albums featured on your Listening Station.



Once you have created the 24 folders on the CF card and named them 1-24 (as shown above) you are ready to start copying your MP3 files into each folder by album. Inside Folder 1 you will put all of the MP3s from your first album, then the same for Folder 2, etc. Once you have these MP3 files inside each folder, you will need to rename them to add a number or letter in the first part of the file name so that the listening station can know which order to play the tracks when a button is pressed. The maximum number of MP3 Files you can program in each folder is 20 Tracks.

As shown below you will want to change the file name of each MP3 file inside the folders to add a 1 or A, then 2 or B, then 3 or C, etc, so that they are in alpha-numeric order according to the order in which you would like them to play.

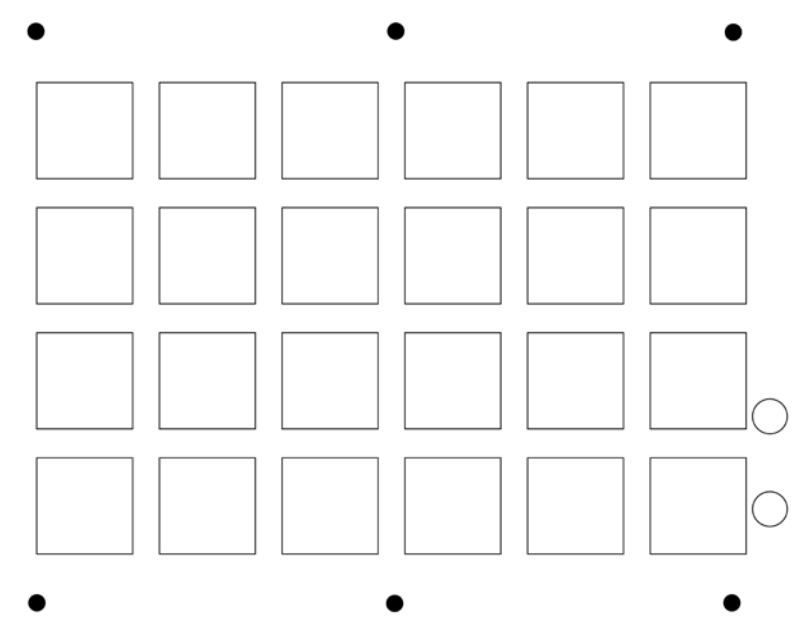


As mentioned above the unit will play the MP3 files located inside each of the folders in order, first to last by the file name in alpha-numeric order (ie: 1,2,3,4,5 -OR- a,b,c,d,e).

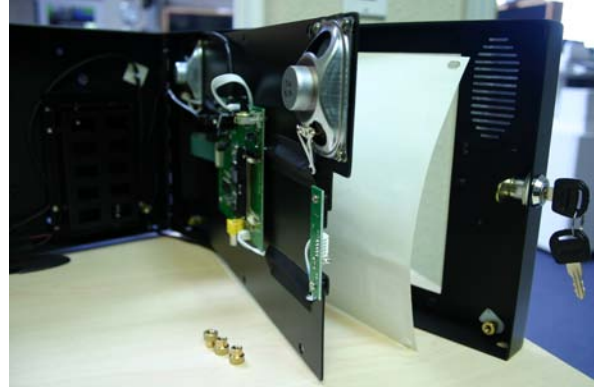
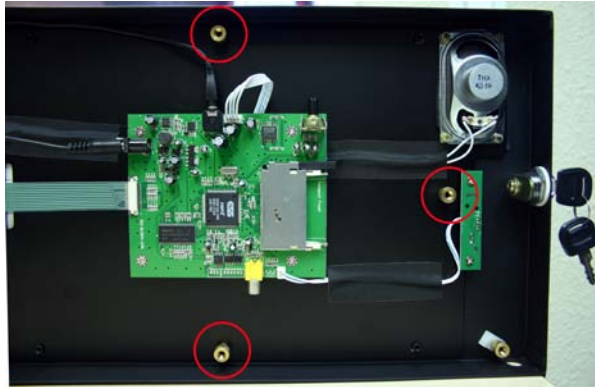
Once you have created all of the folders on the CF card with the MP3 files in the correct order. You can remove the CF card from your reader and insert it into the CF card slot inside the Digital Listening Station. Provide power and wait 10 seconds for the unit to boot up. Then you are done with the MP3 programming of your unit. Press one of the membrane buttons to test.



Next you will need to design the graphic overlay that goes over the 24 button membrane pad. This graphic will direct your customers on which CD cover to press to hear that titles music. Below is a picture of the 24 Button PDF design template that is included on your software disc. You will need to use this PDF template to design your artwork in a program like Photo Shop or Illustrator. Then print your design on 8.5" x 11" brochure paper to be used as a graphic overlay to go over the membrane touch pad. If you need help with designing or printing this graphic, we offer design and printing at an additional fee. Contact us at (888) 989-1370 or (909) 599-1370 outside of the US.

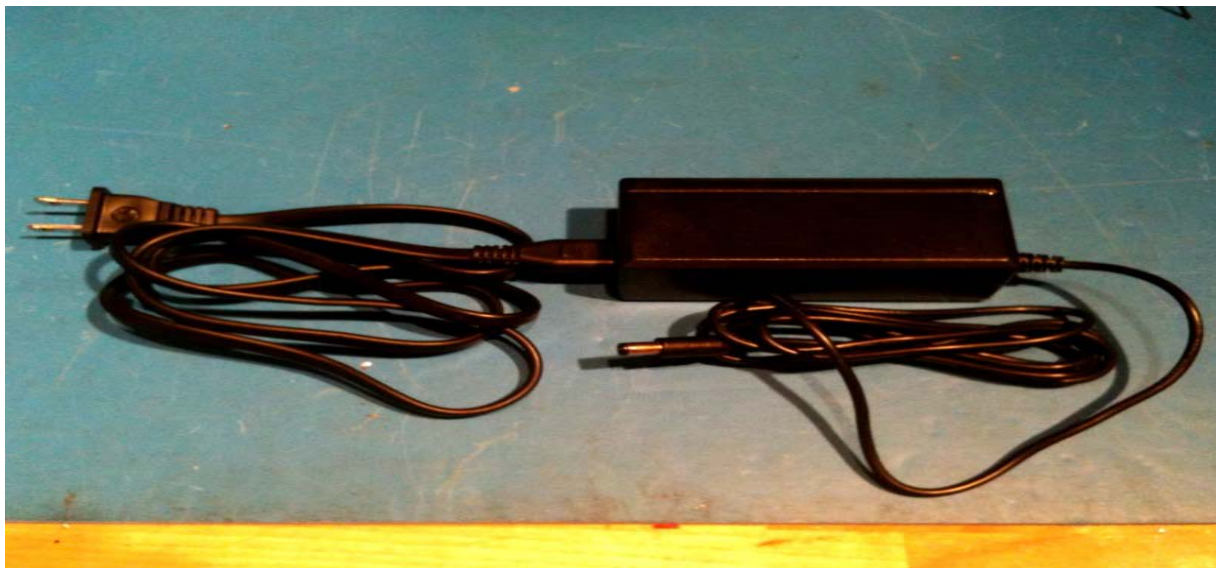


Once your graphic overlay is printed you will need to use a hole punch make the holes in the graphic overlay in the locations shown on the PDF design template, so that the graphic overlay will line up with the membrane buttons on the Digital Listening Station. Then open up the hinged panel as pictured below and insert your graphic overlay.



To power your Digital Listening Station you can use either 8 qty D-Cell Alkaline Batteries (not included) or the standard US Power Supply (included). The unit comes with the battery lead plugged into the board. If you would like to set up the unit to have temporary battery power, simply remove the 4 screws that hold the battery cover down and insert D-Cell Alkaline batteries.

If you would like to switch to the Power Supply, start by unplugging the power lead that goes from the battery case to the board. Then feed the cord for the Power Supply through the hole on the bottom right side of the unit as shown below.





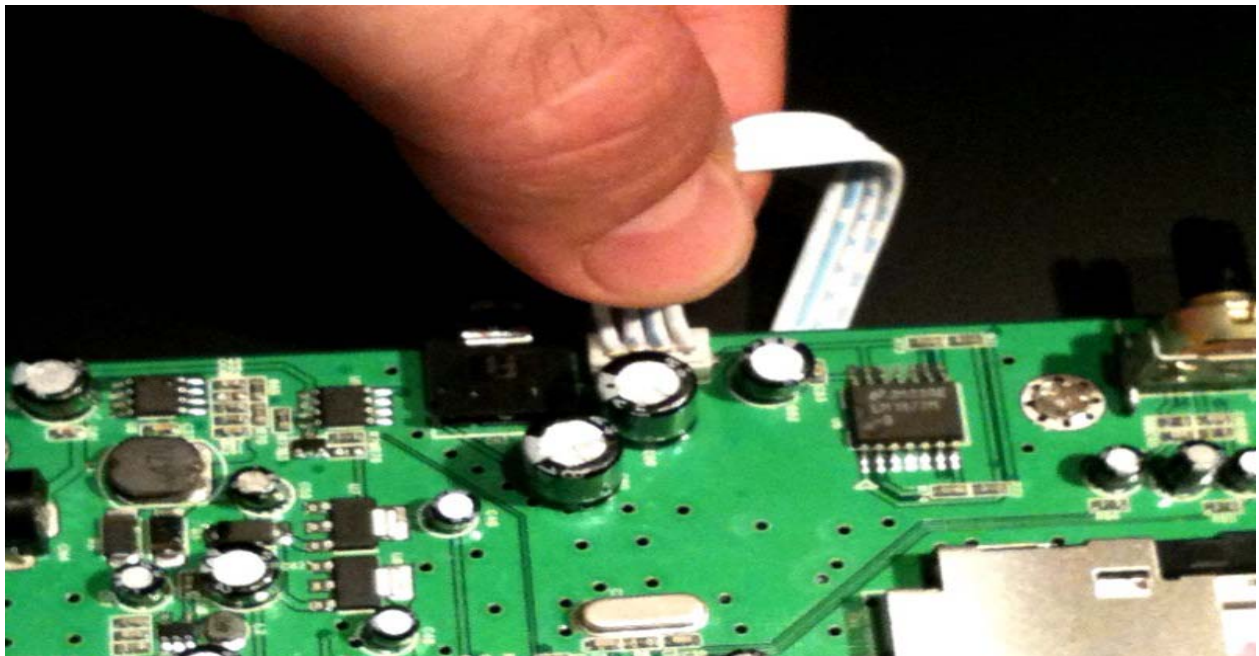
Remove the gold nut from the screw post and as shown and open up the plastic clamp. This will allow you to feed the power cord through the hole and the plastic clamp and plug the cord into the same port that you removed the battery cable from. At the top of the next page you will see a picture of what this should look like once installed.

If you have purchased headphone from us you will be wiring these in the same way as the above power cord. But you will plug the headphones into the 3.5mm headphone jack located at the top of the board.





If you would like to disconnect the built-in stereo speakers, so that you can only hear audio from the headphones, disconnect the speaker wire from the circuit board by pulling out the plastic connector that is attached to white speaker wire as shown below.



The Digital Listening Station gives you the ability to preset the beginning volume of your audio by turning the knob shown below that is located above the Flash Card slot to your desired starting volume level. Once set this will be the starting volume for the player. The customer can increase the volume by using the membrane volume buttons on the touch panel.



Please contact us with questions. All Digital Listening Stations include a 1 Year Warranty against manufacturing defects. If you have problems or questions about this product please contact us at (909)599-1370.

Thank you for your purchase!

The Recom Group, Inc.
449 Borrego Court
San Dimas, CA 91773
Phone: (909)599-1370